

andora furniture market

TURKEYNER





01

Color : Teak / Black
Model : PVC Clad
Lock : Semi Center



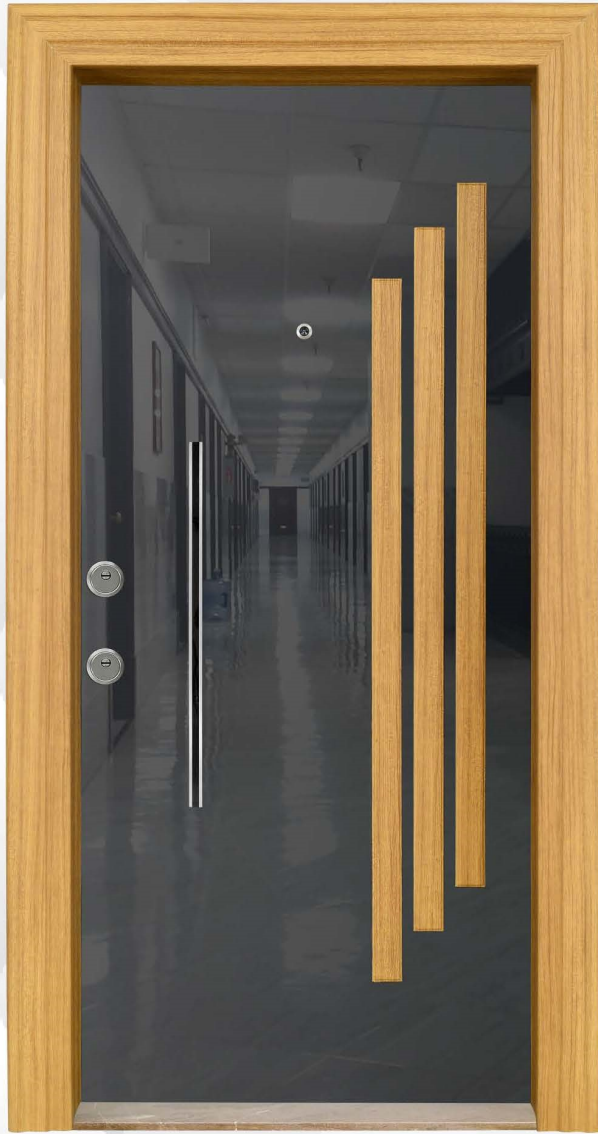
02

Color : Teak / Black
Model : PVC Clad
Lock : Centered



03

Color : Teak / Black
Model : PVC Clad
Lock : Centered



04

Color : Teak / Black
Model : PVC Clad
Lock : Centered



05

Color : Teak
Model : PVC Clad
Lock : Monobloc



06

Color : Italian Walnut / White
Model : PVC Clad
Lock : Semi Centered



07

Color : Italian Walnut
Model : PVC Clad
Lock : Monobloc



08

Color : Bamboo/White
Model : PVC Clad
Lock : Monobloc



09

Color : Italian Walnut
Model : PVC Clad
Lock : Centered



10 Color : Bamboo
Model : PVC Clad
Lock : Monobloc



11 Color : Italian Walnut /Black
Model : PVC Clad
Lock : Monobloc



12 Color : Italian Walnut
Model : PVC Clad
Lock : Centered



13 Color : Cappuccino/Italian Walnut
Model : PVC Clad
Lock : Centered



14 Color : Italian Walnut / White
Model : PVC Clad
Lock : Monobloc



15 Color : Brilliant White
Model : Brilliant PVC Clad
Lock : Monobloc



16 Color : White
Model : PVC Clad
Lock : Monobloc



17 Color : White
Model : PVC Clad
Lock : Monobloc



18 Color : White / Anthracite
Model : PVC Clad
Lock : Centered



19 Color : Walnut / White
Model : PVC Clad
Lock : Monobloc



20 Color : Italian Walnut
Model : PVC Clad
Lock : Monobloc



21 Color : Walnut / White
Model : PVC Clad
Lock : Centered



22 Color : Italian Walnut / White
Model : PVC Clad
Lock : Monobloc



23 Color : Cappuccino/Italian Walnut
Model : PVC Clad
Lock : Monobloc



24 Color : Italian Walnut
Model : PVC Clad
Lock : Centered



25

Color : Italian Walnut / White
Model : PVC Clad
Lock : Monobloc



26

Color : Italian Walnut
Model : PVC Clad
Lock : Monobloc



27

Color : Italian Walnut / White
Model : PVC Clad
Lock : Centered



28

Color : Bamboo
Model : PVC Clad
Lock : Centered



29

Color : Bamboo/ White
Model : PVC Clad
Lock : Monobloc



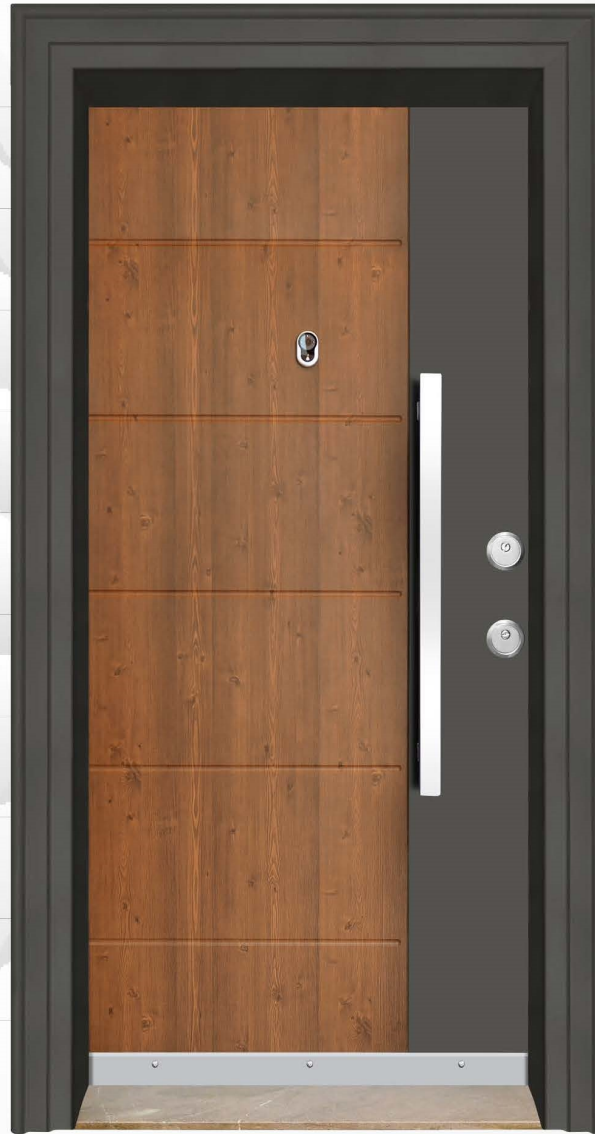
30

Renk : Cappuccino/Italian Walnut
Model : PVC Clad
Lock : Centered



31

Color : Teak
Model : PVC Clad
Lock : Centered



32

Color : Italian Walnut / Anthracite
Model : PVC Clad
Lock : Centered



33

Color : Italian Walnut / Anthracite
Model : PVC Clad
Lock : Centered



34

Color : Brilliant Ultralam
Model : Brilliant PVC Clad
Lock : Semi Centered



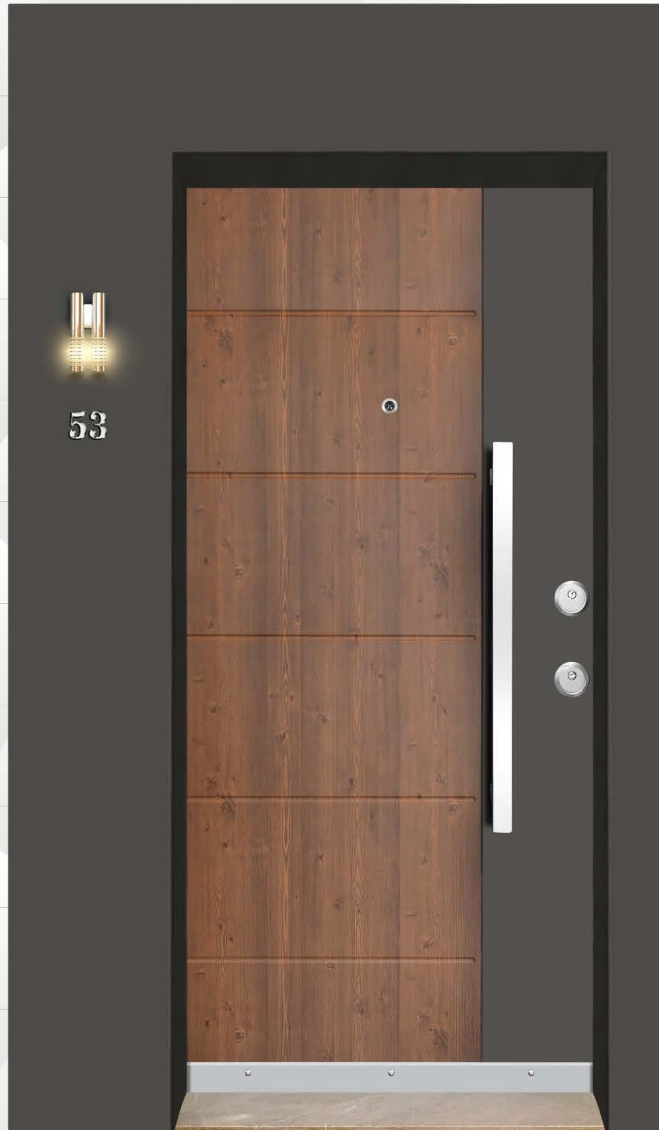
35

Color : Brilliant Ultralam
Model : Brilliant PVC Clad
Lock : Semi Centered



36

Color : Brilliant Ultralam
Model : Brilliant PVC Clad
Lock : Centered



37

Color : Anthracite
Model : Project Door
Lock : Centered



38

Color : Italian Walnut
Model : Project Door
Lock : Centered



53



34



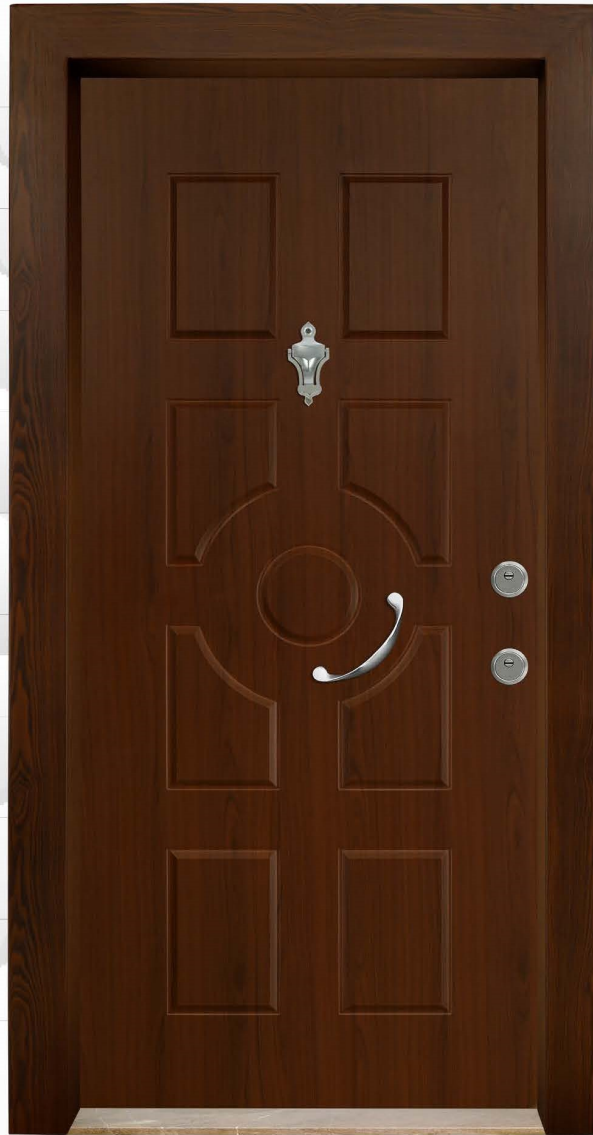
39 Color : Teak
Model : Project Door
Lock : Monobloc

40 Color : Teak
Model : Project Door
Lock : Centered



41

Color : Walnut / White
Model : Electrostatic Transfer Paint
Lock : Monobloc



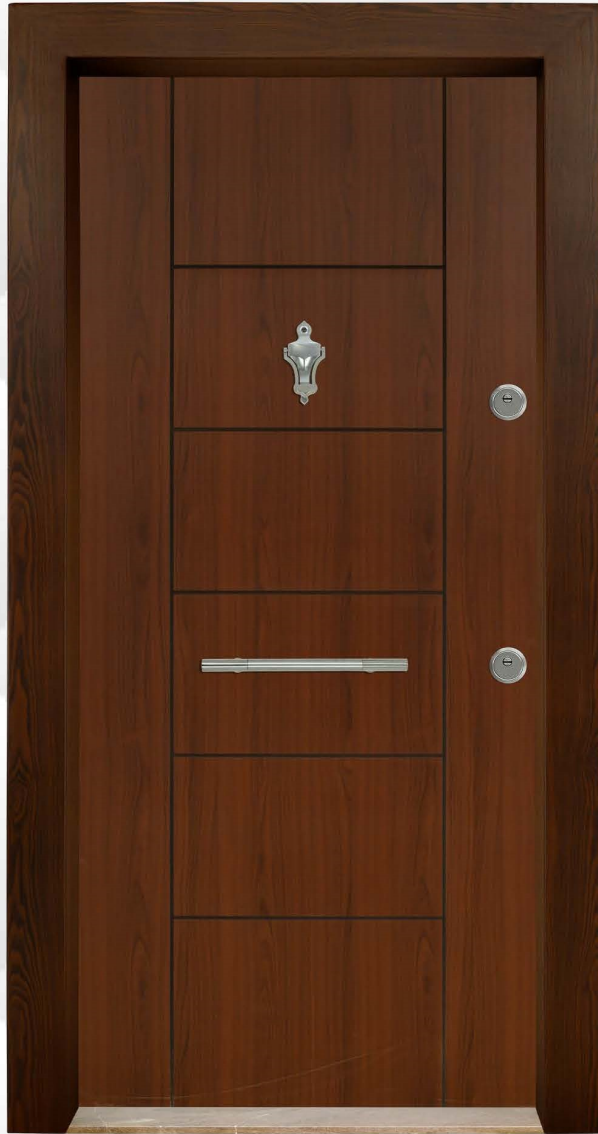
42

Color : Walnut
Model : Electrostatic Transfer Paint
Lock : Centered



43

Color : Walnut / White
Model : Electrostatic Transfer Paint
Lock : Centered



44

Color : Walnut
Model : Electrostatic Transfer Paint
Lock : Monobloc



45

Color : Walnut
Model : Elektrostatic Transfer Paint
Lock : Monobloc



46

Color : Walnut
Model : Electrostatic Transfer Paint
Lock : Monobloc



47

Renk : Parlak Ultralam
Model : Elektrostatik Parlak Boya
Kilit : Monoblok



48

Renk : Beyaz
Model : Elektrostatik Boya
Kilit : Monoblok



49

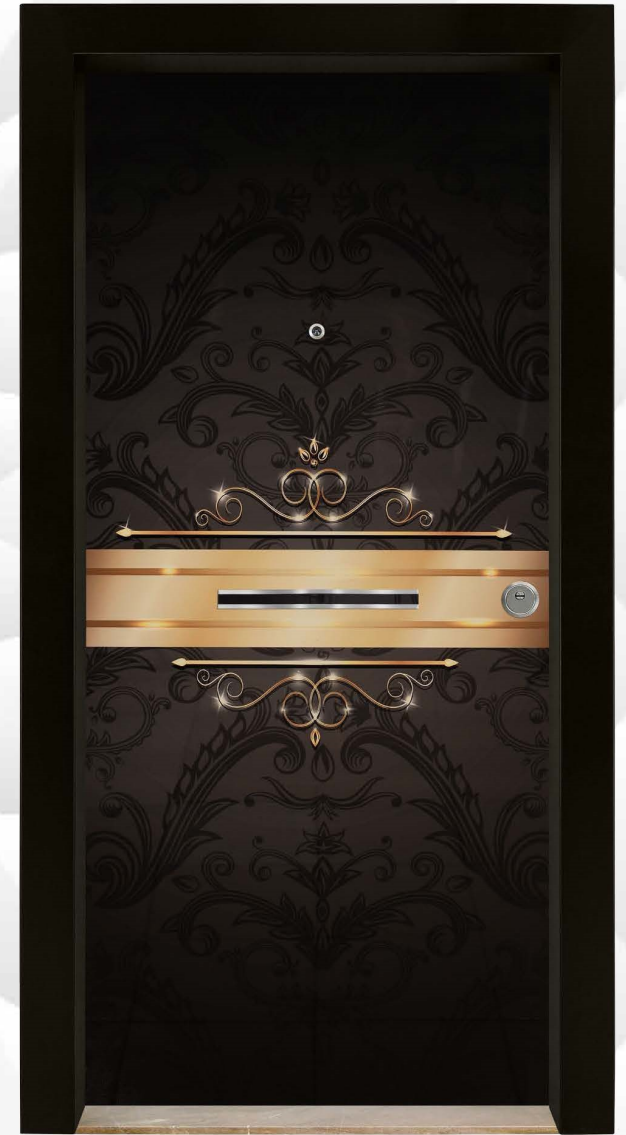
Renk : Beyaz
Model : Elektrostatik Boya
Kilit : Monoblok



50
Color : White
Model : Electrostatic Paint
Lock : Monobloc



51
Color : Brilliant Ultralam
Model : Electrostatic Brilliant Paint
Lock : Centered



52
Color : Brilliant Ultralam
Model : Electrostatic Brilliant Paint
Lock : Semi Centered



53

Color : Bamboo / White
Model : Electrostatic Transfer Paint
Lock : Centered



54

Color : Italian Walnut
Model : Electrostatic Transfer Paint
Lock : Monobloc



55

Color : Italian Walnut / White
Model : Electrostatic Transfer Paint
Lock : Centered



56

Color : Italian Walnut/ White
Model : Electrostatic Transfer Paint
Lock : Monobloc



57

Color : Italian Walnut
Model : Electrostatic Transfer Paint
Lock : Monobloc



58

Color : Italian Walnut/ White
Model : Electrostatic Transfer Paint
Lock : Monobloc



59

Color : White
Model : Fire Door
Lock : Panic Bar



60

Color : Anthracite
Model : Double-Wing Fire Door
Lock : Panic Bar





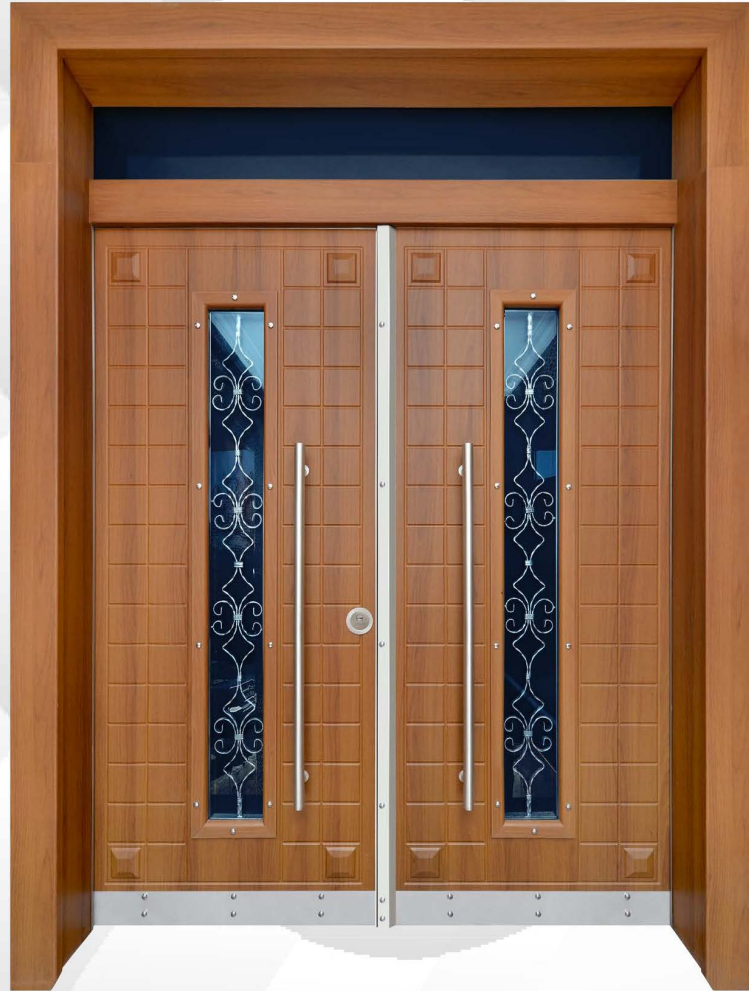
61

Color : Anthracite
Model : Electrostatic Paint
Lock : Power Operated



62

Color : Brilliant Walnut
Model : Brilliant PVC Clad
Lock : Power Operated



63

Color : Italian Walnut
Model : Electrostatic Transfer Paint
Lock : Power Operated



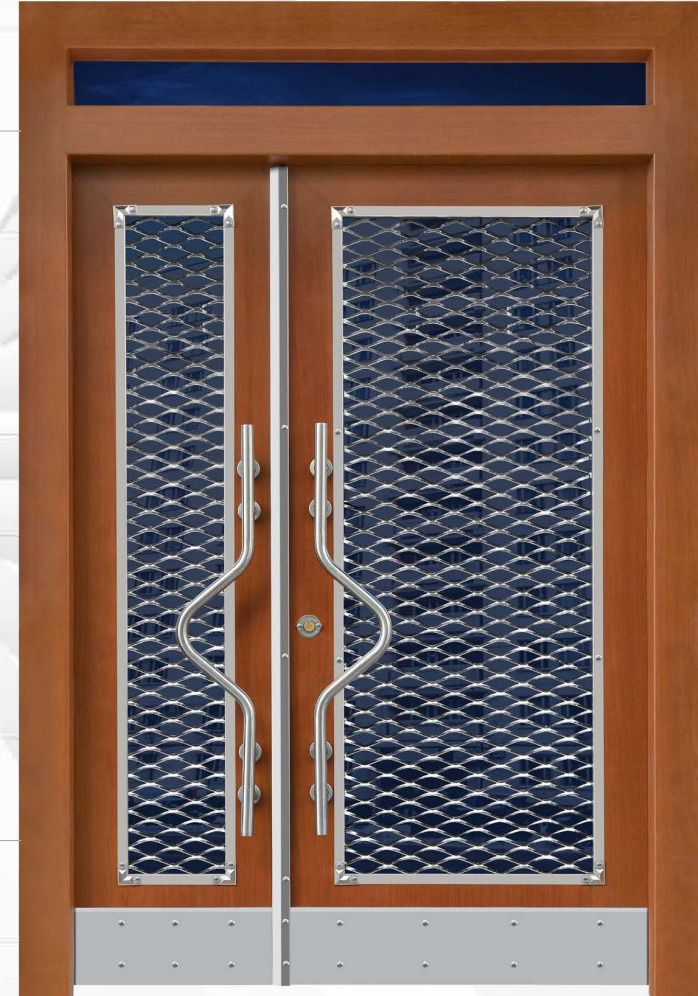
64

Color : Walnut Tone
Model : Electrostatic Transfer Paint
Lock : Power Operated



65

Color : White
Model : Electrostatic Paint
Lock : Power Operated



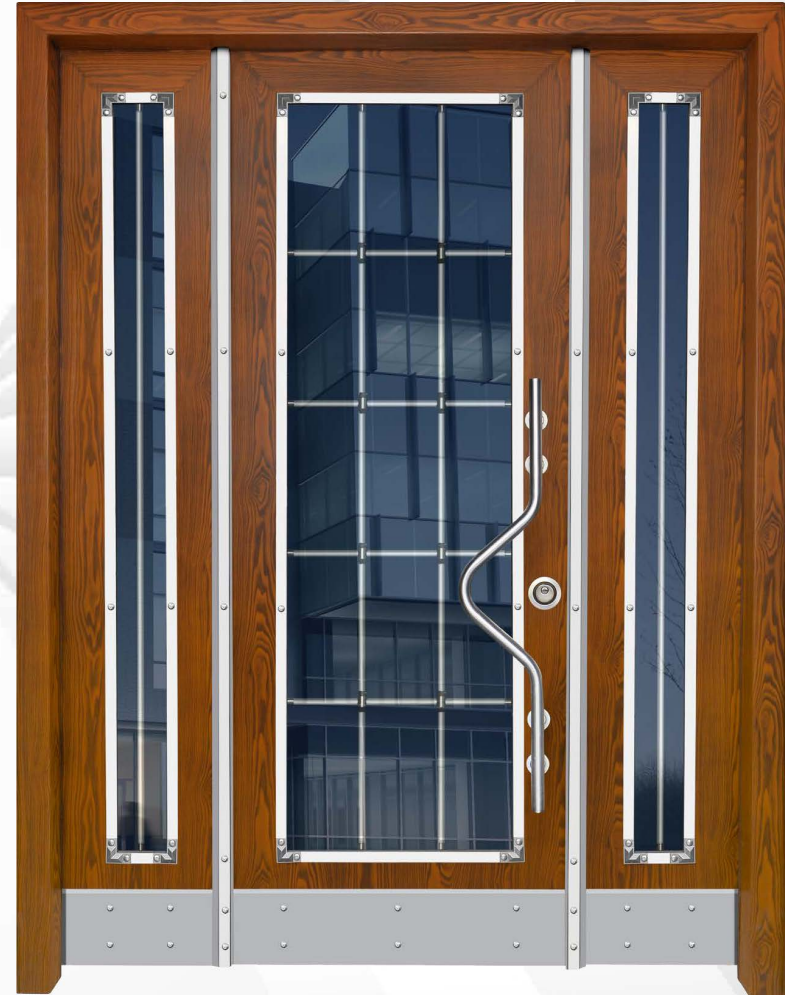
66

Color : Italian Walnut
Model : Electrostatic Transfer Paint
Lock : Power Operated



67

Color : Bamboo
Model : Electrostatic Transfer Paint
Lock : Power Operated



68

Color : Walnut Tone
Model : Electrostatic Transfer Paint
Lock : Power Operated



69

Color : Italian Walnut
Model : Electrostatic Transfer Paint
Lock : Power Operated



70

Color : White
Model : Electrostatic Boya
Lock : Power Operated



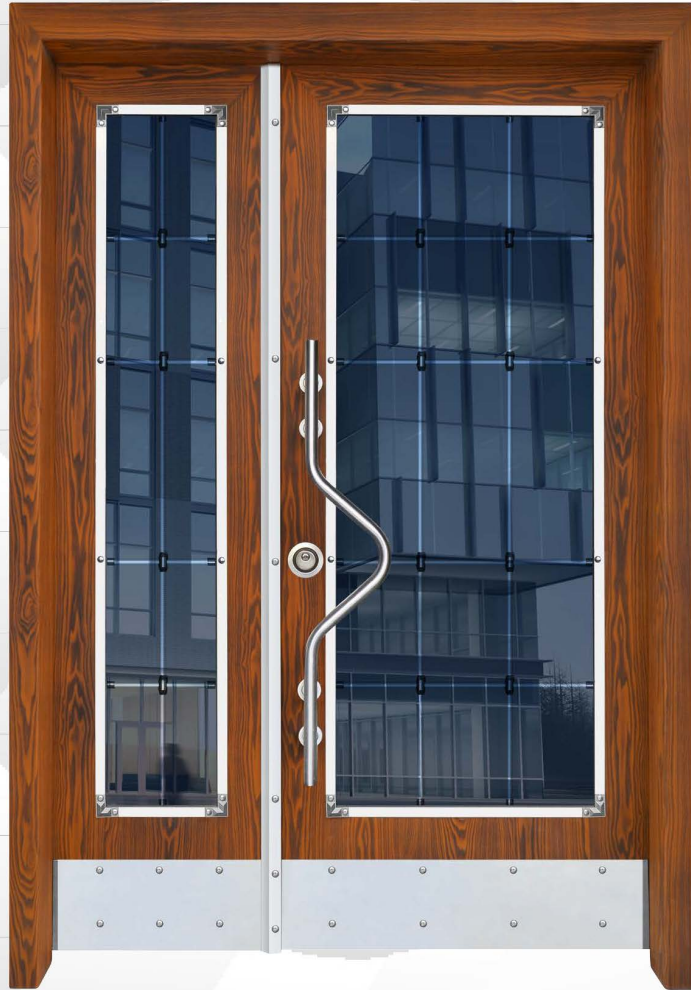
71

Color : Walnut
Model : Electrostatic Transfer Paint
Lock : Power Operated



72

Color : White
Model : Electrostatic Paint
Lock : Power Operated



73

Color : Walnut Tone
Model : Electrostatic Transfer Paint
Lock : Power Operated



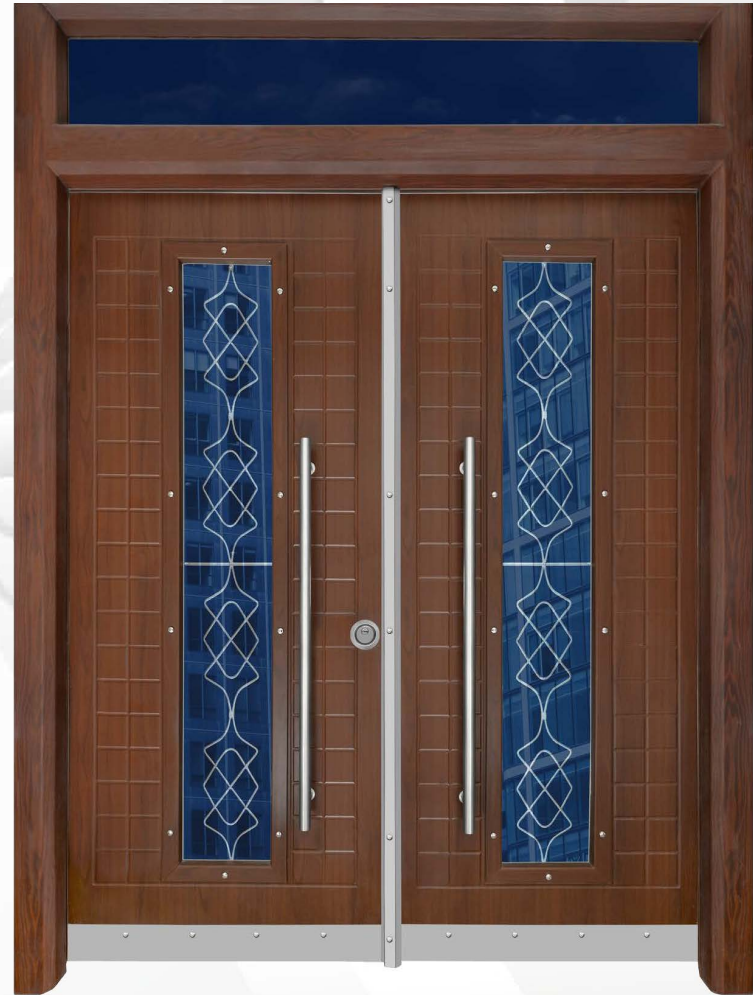
74

Color : Walnut
Model : Electrostatic Transfer Paint
Lock : Power Operated



75

Color : Mahogany
Model : Electrostatic Transfer Paint
Lock : Power Operated



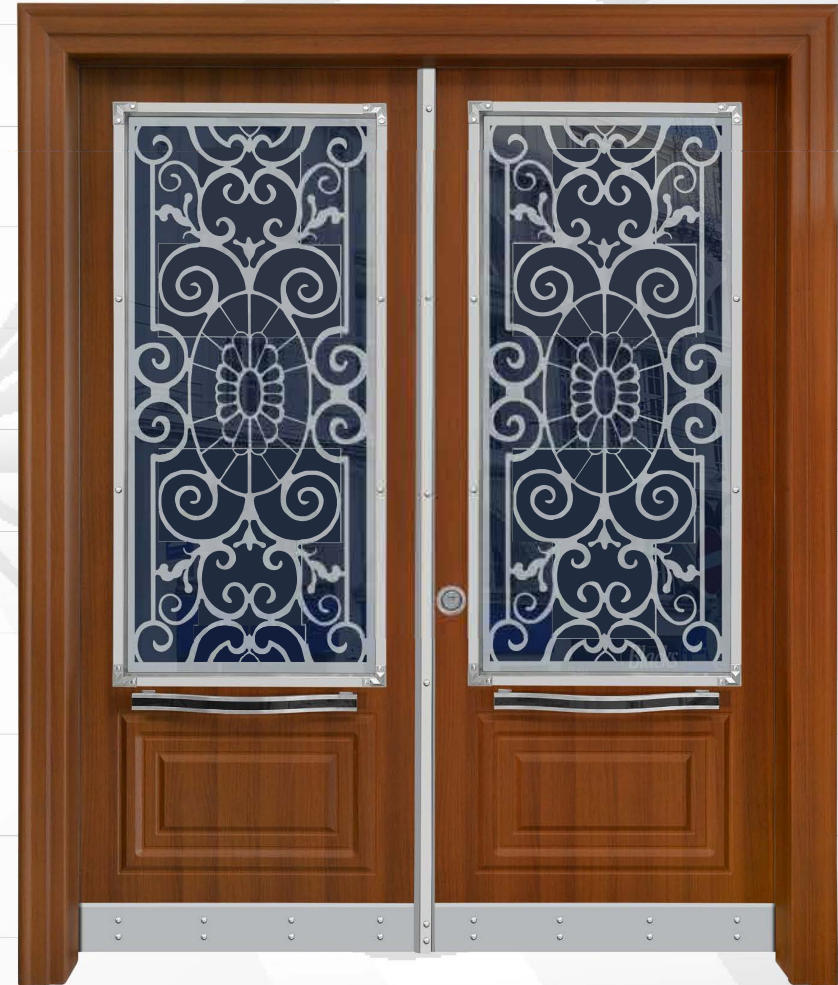
76

Color : Walnut
Model : Electrostatic Transfer Paint
Lock : Power Operated



77

Color : White
Model : Electrostatic Paint
Lock : Power Operated



78

Color : Italian Walnut
Model : PVC Clad
Lock : Power Operated